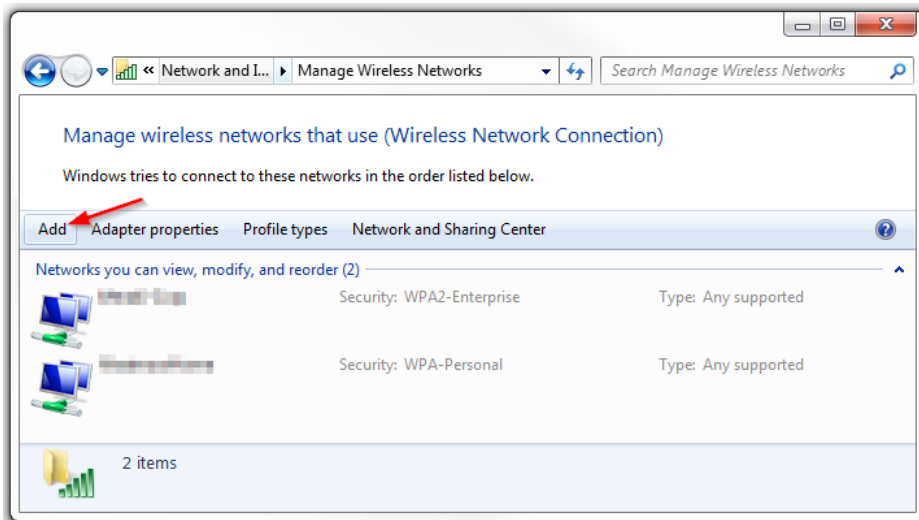
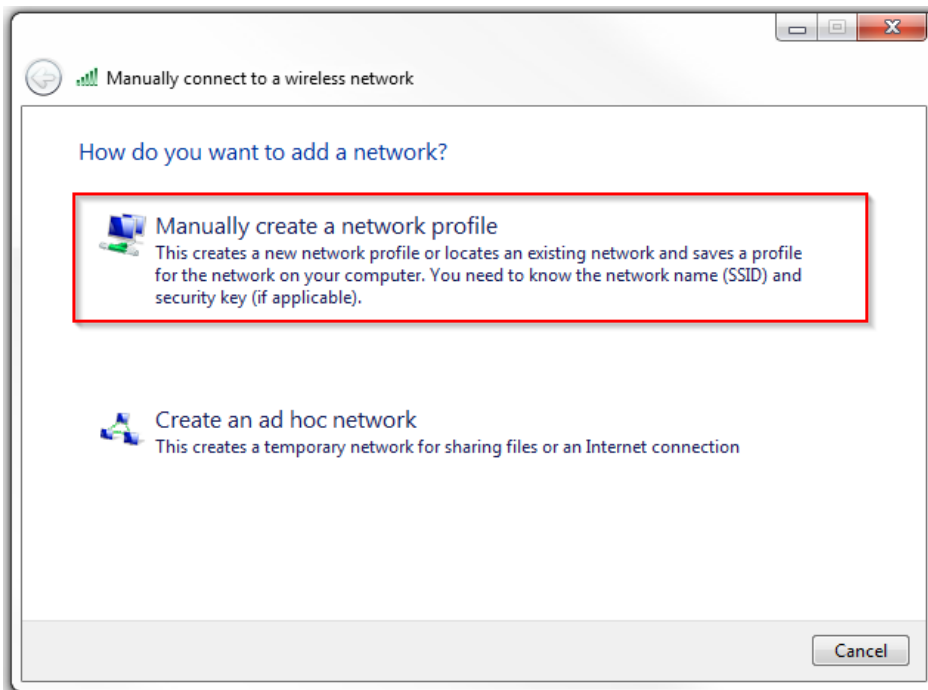


HOW TO: Connect BYOD Windows 7 devices to OCSD Network

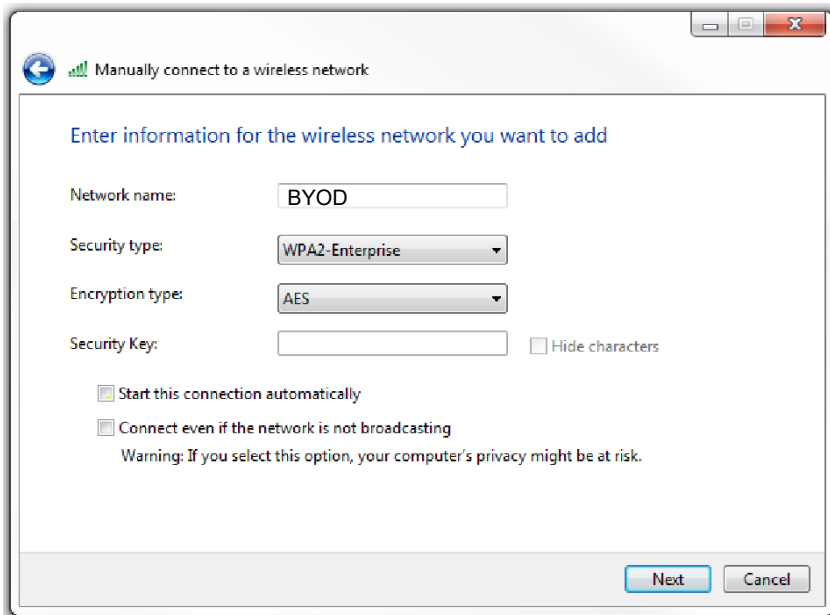
1. Navigate to **Control Panel -> Network and Sharing Center -> Manage Wireless Networks**
2. Click **Add**.



3. In the window that appears, select **Manually connect to a wireless network**.



4. Enter **BYOD** into the **Network Name** box.



5. Select **WPA2-Enterprise** as the security type.

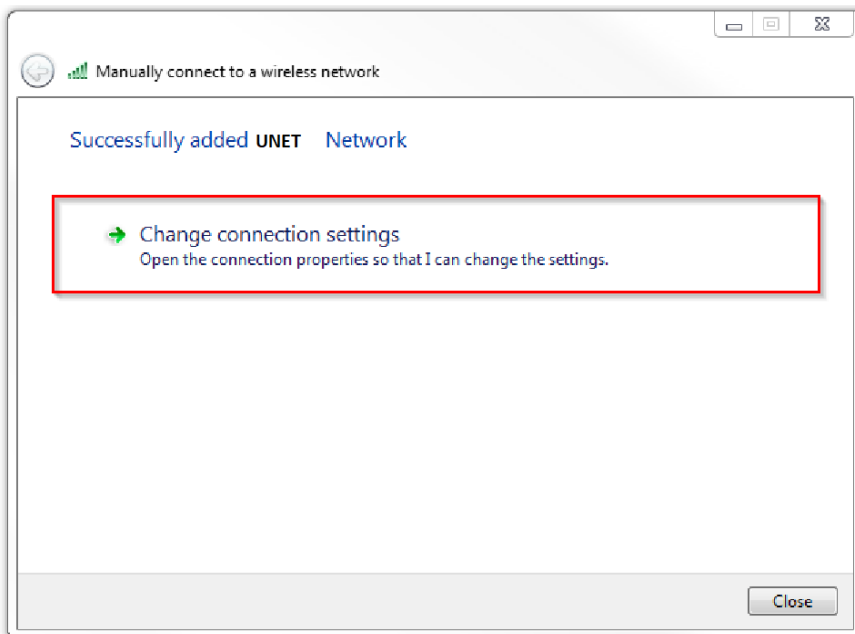
6. Select **AES** as the encryption type.

7. Leave **Security Key** blank

8. Check **Start this connection automatically** to connect as the network becomes available.

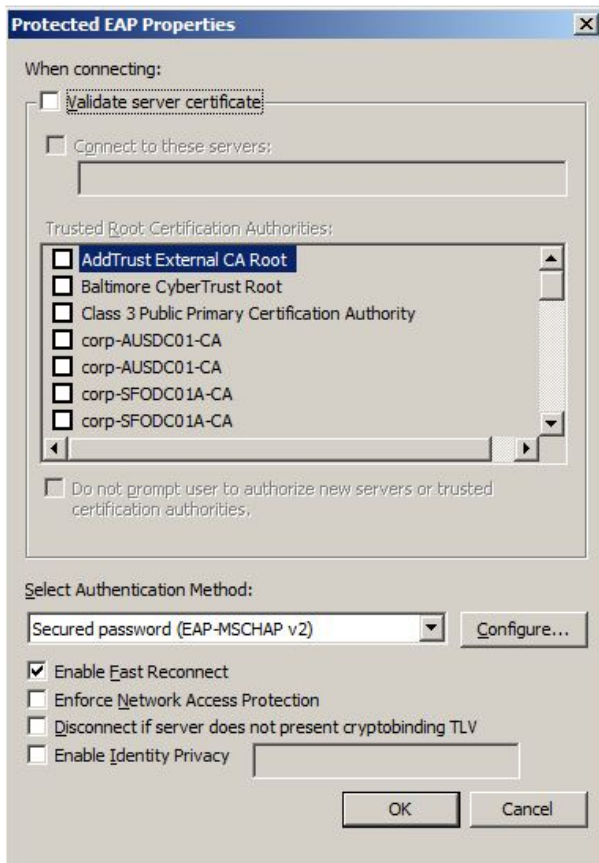
9. Click **Next**.

a. Click **Change Connecting Settings**.



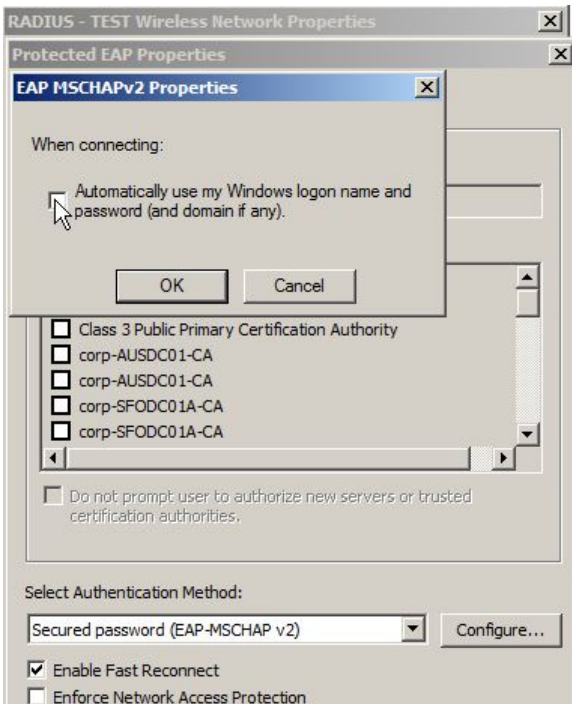
MODIFY SECURITY SETTINGS OF NETWORK PROFILE

1. Select the **Security** tab
2. Ensure **Microsoft: Protected EAP (PEAP)** is selected in the drop down.
3. Click **Settings**.
4. Ensure **Validate server certificate** is **not checked**.



5. Ensure **Connect to these servers** is not selected.
7. Clear the selection for **Do not prompt user to authorize new servers or trusted certification authorities**.
8. Ensure **Secured password (EAP-MSCHAPv2)** is selected under **Select Authentication Method**.

9. Click **Configure** and **clear** the selection for **Automatically use my Windows logon name and password**.



10. Click **OK**.
11. Click **OK**.
12. Click **Advanced settings**
13. Ensure **Specify authentication mode** is selected, and change the drop down to **User authentication**.
14. Click **OK**.
15. Click **OK**.

CONNECT TO THE WIRELESS NETWORK

1. Click on the wireless network icon in the notification area.
2. From the wireless network list, select the **UNET** required and click **Connect**.
3. When prompted, enter your username and password.

If you did not clear the selection for **Automatically use my Windows logon name and password** then you will not be prompted and will not connect

4. You should now be connected to the wireless network.